

Focus Areas of Statewide Ecological Significance

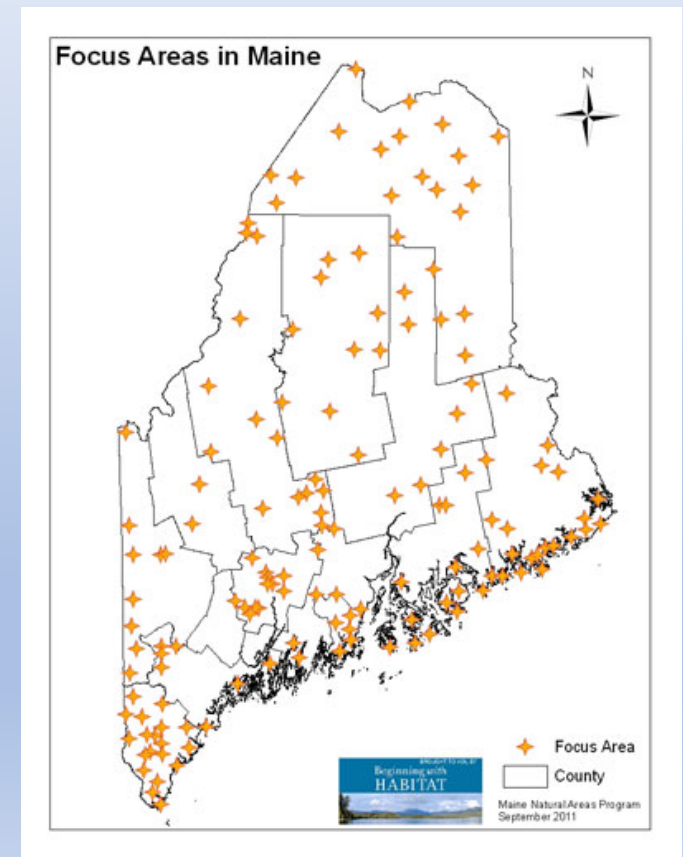
Doreen MacGillis, Land Protection Specialist
York Land Trust

Focus Areas of Statewide Ecological Significance in Maine

- 140 Focus Areas in Maine
- Contain unusually rich concentration of at risk species and habitats
- Represent about 20% of Maine's landscape
- Represent the very highest quality habitats in the state
- Support rare plants, animals, and natural communities

Who Identifies Focus Areas?

Maine Natural Areas Program (MNAP)
Maine Department of Inland Fisheries and Wildlife (MDIFW)
Maine Department of Marine Resources (DMR)
U.S. Fish and Wildlife Service (USFWS)
The Nature Conservancy (TNC)
Maine Audubon
Maine Coast Heritage Trust (MCHT)



How Focus Areas Are Identified

One or more of the following must be present:

- Globally rare plant or animal
- Three or more healthy populations of a rare plant species
- Any healthy population of a rare animal species
- Rare natural community
- Excellent example of a common natural community
- Good example of a common natural community *and* one or more high-value wildlife habitats
- Large undeveloped block *and* at least one of the following: a good example of a common natural community OR high value wildlife habitat OR two or more healthy populations of a rare plant species



Why Designate Focus Areas?

- Helps to build regional awareness and draw attention to exceptional natural landscape conditions where multiple resources converge.
- Gives momentum to municipalities, land trusts, and regional initiatives working on land conservation.



Three Focus Areas of Statewide Ecological Significance in York

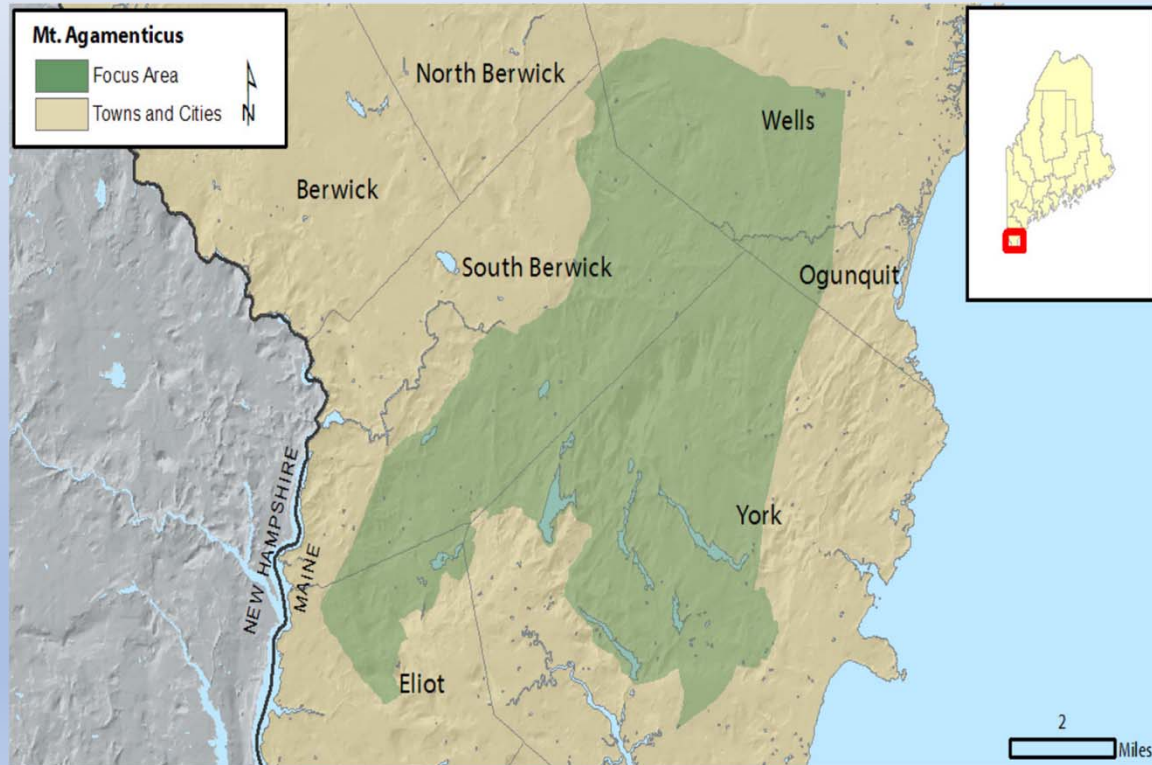
Mt. Agamenticus

York River Headwaters

Braveboat Harbor and Gerrish Island



Mt. Agamenticus Focus Area



Mt. Agamenticus Significance

Largest remaining expanse of undeveloped coastal forest between Acadia National Park and the New Jersey Pine Barrens.

One of the richest concentrations of vernal pool habitat in the state, supporting state-listed Blanding's and spotted turtles.

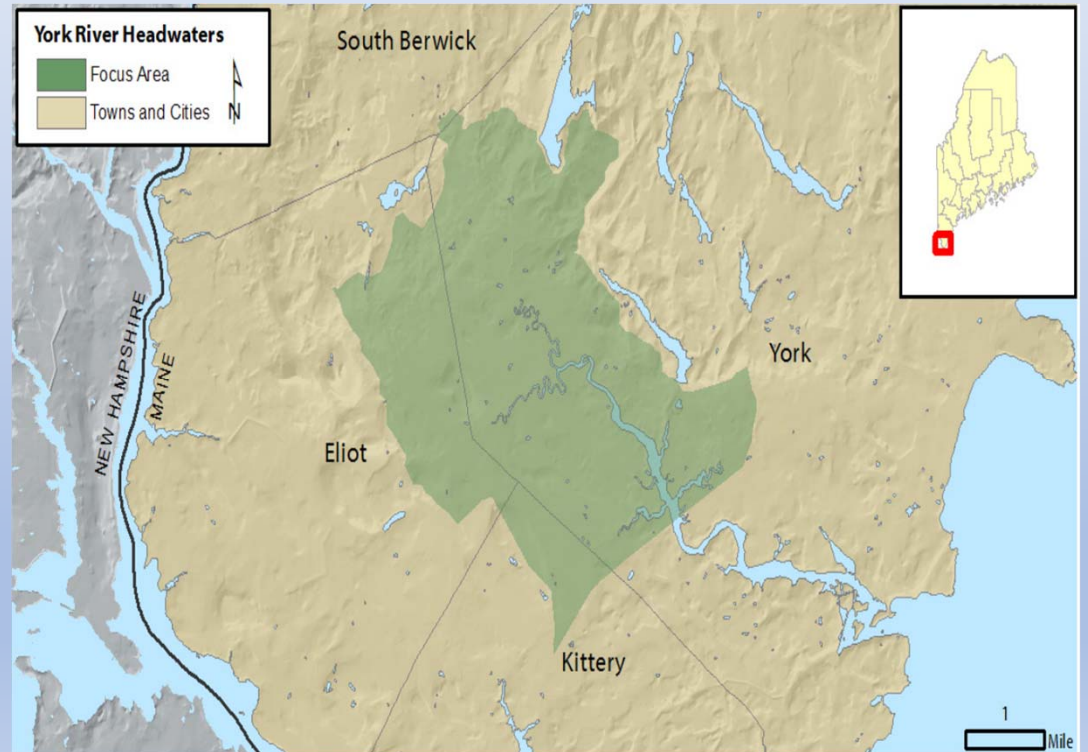
Inhabited by 12 animal species and 21 plant species that are considered rare in Maine.

The forest that extends northward from Mt. Agamenticus features Maine's only chestnut-oak woodland.

An area with high-climate change resiliency.



York River Headwaters Focus Area



York River Headwaters Significance

May be the most ecologically diverse coastal drainage for its size in the Gulf of Maine.

The estuary provides high-value tidal wading bird and waterfowl habitat and serves as an important roosting and feeding area.

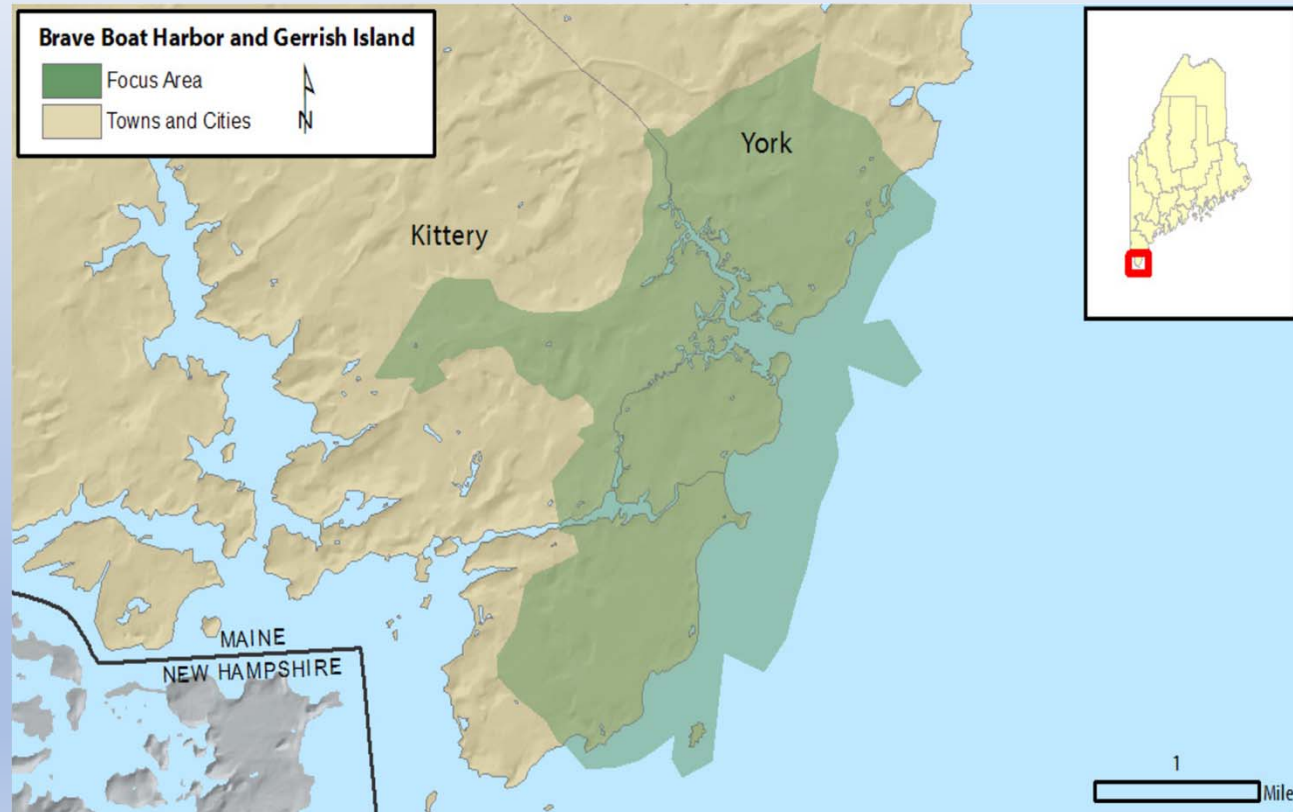
The estuary's saltmarshes provide excellent spawning habitat, and twenty-eight species of estuarine and freshwater fish have been documented in the York River.

The York River marshes also provide breeding habitat for a number of migratory birds, including the rare saltmarsh sharp-tailed sparrow.

Forested wetlands and uplands provide excellent habitat for numerous rare plant and animal species.



Braveboat Harbor And Gerrish Island Focus Area



Braveboat Harbor and Gerrish Island Significance

Includes a rich association of natural community types that provide habitat for numerous coastal plants and animals, including rare species.

Has three documented rare natural community types, red oak - white oak forest, dune grassland, and spartina saltmarsh.

Contains a high concentration of vernal pools and pocket swamps.

Contains tidal wading bird and waterfowl habitats and Inland wading bird and waterfowl habitats.

Considered a high value Shorebird Area and Harlequin Duck wintering area.

